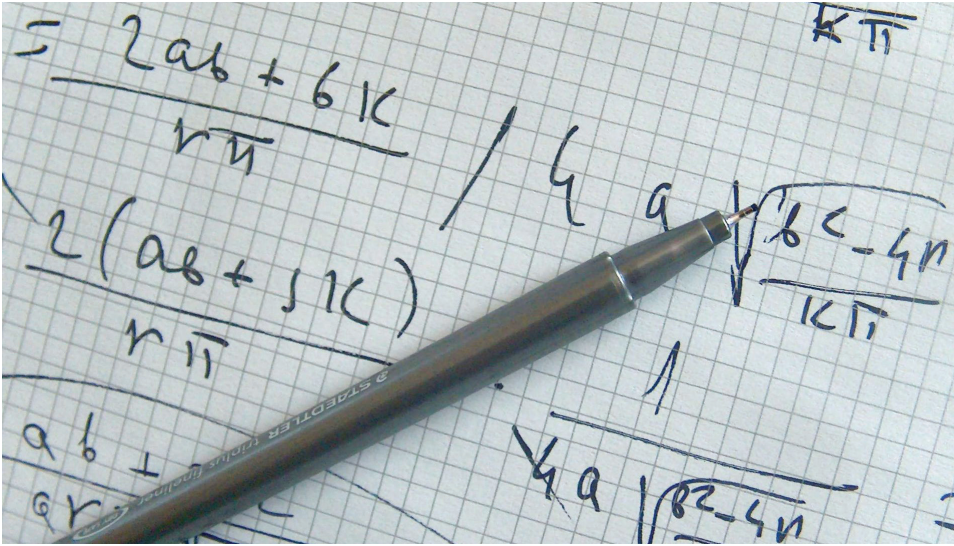


MATHEMATICS

Associate of Science degree



Program and Career Description:

The Mathematics emphasis is a two-year program for students planning to complete a bachelor's degree in Mathematics. Students pursuing careers in actuarial science, operations research, statistics, teaching, and national security should consider this degree. Below are a few examples of career and salary estimates.

Career	Entry-Level Education	Entry-Level Pay	Median Pay	Experienced Pay
Actuary	Bachelor's degree	\$64,600	\$93,500	\$118,880
Statistician	Master's degree	\$44,590	\$65,750	\$80,230
Mathematician	Master's degree	≤ \$54,890	\$105,810	≥ \$160,310

Career and salary information taken from JOBS4TN.GOV, and Bureau of Labor Statistics, U. S. Department of Labor on the internet at www.bls.gov. Check out the [Occupational Outlook Handbook](#) on this website for additional information about similar occupations, education requirements and abilities, and job outlook for these careers. Salaries are not guaranteed.

Transfer Options

This program is a Tennessee Transfer Pathway (TTP) major. A student who completes the associates degree in this major is guaranteed that all required community college courses will be accepted in this major at the transfer institution. To see which four-year institutions offer this TTP major and guarantees a seamless transfer, visit the Tennessee Transfer Pathway website at www.tntransferpathway.org.

Articulation agreements exist between other private and non-TN public institutions. These agreements are available at www.columbiastate.edu/admissions/transfer-information.



MATHEMATICS

Major in Tennessee Transfer Pathway with Emphasis in Mathematics (A.S.)

Program Requirements

Students may be required to take additional Learning Support courses.

Communications Requirement
COMM 2025 or COMM 2055
ENGL 1010, 1020

History Requirement (Take 2 courses)
HIST 2010, 2020, 2030, 2310, 2320

Humanities/Fine Arts (Take 3 courses -- one must be a literature course)
ART 1035, 2000, 2020
ENGL 2160, 2860
HUM 1010, 1020
MUS 1030
PHIL 1030, 1040, 2200
THEA 1030
Literature Options: ENGL 2055, 2130, 2235, 2310, 2320

Natural Sciences Requirement (Take 2 courses)
ASTR 1030
BIOL 1080 (must not be paired with another BIOL)
BIOL 1110, 1120, 2010, 2020
CHEM 1110, 1120
ESCI 1010, 1020
PHYS 2010, 2020, 2110, 2120
PSCI 1030

Mathematics Requirement
MATH 1910

Social/Behavioral Sciences (Take 2 courses)*
ANTH 1230, 1430
ECON 2100, 2200
GEOG 2010
MCOM 1110
PHED 2120
POLS 1010, 1030, 2025, 2035
PSYC 1030, 2130
SOC 1010, 1040, 2010

Major Required Courses
CISP 1010**
COLS 101
MATH 1920, 2010, 2110, 2120

*Students who wish to pursue a concentration in actuarial science available at the University of Tennessee, Chattanooga; Middle Tennessee State University; or Tennessee State University should complete ECON 2100 and ECON 2200 to fulfill the requirement in social/behavioral sciences.

**CISP courses have very limited offerings and should be considered first in registration.

If you have completed TN eCampus courses, run a degree audit from the student tab in myChargerNet to determine how these courses apply to this program.

Requirements for Graduation include:

- earning 25% of total program credits in residence at Columbia State.
- earn a cumulative GPA of 2.0 or higher.
- taking the Exit Exam.

Sample Academic Plan

Students requiring MATH 1130 and MATH 1730 should take these courses prior to beginning the following pathway to ensure timely completion.

First Year – Fall Semester

___ ENGL 1010	English Composition I	3
___ Humanities/Fine Arts		3
___ CISP 1010**	Computer Science I	4
___ MATH 1910	Calculus I	4
___ COLS 101	Columbia State College Success	1
		15

First Year – Spring Semester

___ ENGL 1020	English Composition II	3
___ COMM 2025	Fundamentals of Communication or	
___ COMM 2055	Argumentation and Debate	3
___ Natural Science Requirement		4
___ MATH 1920	Calculus II	4
		14

Second Year – Fall Semester

___ Literature Requirement		3
___ MATH 2110	Calculus III	4
___ Social/Behavioral Science		3
___ History Requirement		3
___ Natural Science Requirement		4
		17

Second Year – Spring Semester

___ Social/Behavioral Science		3
___ MATH 2120	Differential Equations	3
___ MATH 2010	Introduction to Linear Algebra	3
___ History Requirement		3
___ Humanities/Fine Arts		3
		15

TOTAL CREDIT HOURS 61

At some universities, foreign language may be required in certain programs that lead to the Bachelor of Arts Degree. Complete information regarding foreign language requirements at each university may be found on the transfer and articulation web sites of the Tennessee Board of Regents and the University of Tennessee System. Community college students are encouraged to be familiar with foreign language requirements at the universities and, if applicable, complete the requirements before transferring.

For more information contact:

James Smith at
jsmith@columbiastate.edu or 931.766.1481
or

Science, Technology and Math Division office at
931.540.2710

Columbia State Community College, a Tennessee Board of Regents institution, is an equal opportunity, affirmative action educational institution.
CoSCC- MATH-02-14-18